

STATEMENT OF QUALIFICATIONS

# ENVIRONMENTAL CONSULTING

CEQA / NEPA • BIOLOGICAL SURVEYS • NATURAL RESOURCE MONITORING • CLIMATE CHANGE



# INTRODUCTION

## SUMMITWEST DELIVERS EXCELLENCE IN ENVIRONMENTAL CONSULTING SERVICES TO CLIENTS IN THE WESTERN USA.

SummitWest Environmental, Inc. (SummitWest) breaks the mold in environmental consulting. We stand out in the world of small businesses for our ability to blend the strategic prowess and leadership of a large firm with the agility of a smaller one.

During our 13 years in business, we have redefined excellence in small consulting firms through longevity and commitment to our clients and team alike.

Our business approach focuses on enhanced efficiency, seamless transitions and excellent quality of deliverables. From project planning to internal systems and structure, our Leadership team is involved, providing a clear, aligned vision that ensures everyone is on the same path.



summitwestenv.com



info@summitwestenv.com



(619) 796-5564





# WE ARE KNOWN FOR:

## INNOVATIVE STRATEGY

We anticipate challenges and proactively address them to ensure project success. Our strategic approach covers all project stages, leveraging efficiency and automation. With a nimble team and a robust structure, we adapt to client needs, changing schedules, and urgent tasks swiftly.

## EXCELLENCE IN VALUE

At SummitWest, we deliver value to our clients by automating time-intensive and error-prone tasks and providing comprehensive administrative support to our remote field teams. These savings translate into a higher than average support to field staff ratio as well as more in-depth training and mentorship opportunities for our staff, leading to a better overall product.

We also bring an academic approach to our systems development, data management, and technical expertise - it's not just about getting things done; it's about doing them right. Our dedication to excellence is supported by empirical, tangible, and unbiased data.

## ACCOUNTABILITY

Accountability isn't just a priority, it's one of our core values. We recognize that partnership relies on strong communication, transparency and goal alignment. Your environmental projects are our responsibility, from start to finish. When we say we'll deliver, we mean it. And with our in-house Safety program, we can ensure your success is risk-proof.



Our **mission** is to pioneer  
strategies for the  
environment.



# OUR SERVICES

SummitWest specializes in providing expert environmental consulting services in natural resource management, CEQA permitting, and project management.

## ENVIRONMENTAL PERMITTING / PLANNING & PROJECT MANAGEMENT

- Environmental Compliance Permitting and Planning
- CEQA/NEPA Permitting, incl. Resource Agency Coordination
- Wetland Permitting and Planning ; Section 401, 404, and 1600 Permits
- Federal Endangered Species Act Biological Assessments and Compliance
- Program and Project Management, Development, Implementation
- Technical Report and Environmental Document Preparation

## BIOLOGICAL RESOURCES DESKTOP SUPPORT

- Sensitive Species Inventories and Biological Desktop Reviews
- Biological Constraints Reports (BCRs) and Analyses (BCAs)
- Pre-activity Survey Reports (PSRs)
- Section 7 Endangered Species Consultations
- Lead Environmental Inspector Reports and Management
- Habitat Mitigation, Monitoring, and Reporting Plans (HMMP)
- Geographic Information Services

## BIOLOGICAL SURVEYS & RESOURCE MONITORING

- General Habitat Assessments & Surveys
- Nesting Bird Surveys
- Botanical and Wildlife Surveys
- Vegetation Classification and Mapping
- Protocol Threatened, Endangered, and Sensitive Species Surveys
- Wetland Delineations and Determinations
- Environmental Compliance Monitoring & Pre- and Post-Construction Surveys
- Aerial (Drone) Surveys
- Worker Environmental Awareness Program (WEAP) Training
- Ecological Restoration Planning and Implementation; Mitigation and Management Plans
- Dry season Fairy Shrimp Soil Processing and Culturing

## CLIMATE CHANGE

- Climate Action Plans
- Climate Resiliency and Sustainability
- Climate Refugia Studies
- GIS-based Vulnerability Mapping
- Greenhouse Gas Emissions
- Ecological Valuations
- Emissions Reduction Strategies & Policy Development
- Carbon Sequestration Calculations



# WHY CHOOSE SUMMITWEST

WE DELIVER ON OUR PROMISES AND PROVIDE POSITIVE CLIENT EXPERIENCES.

Our team's commitment to excellence enables us to consistently deliver an exemplary product on time, every time.

## COLLABORATIVE

We've redefined collaboration, internally and externally, ensuring goal alignment from client intake to final deliverables. Our unique Point of Contact (POC) Program fosters continuous collaboration across departments for a seamless project lifecycle.

## STRUCTURED

Delivering consistently excellent work requires structure. Consistency is our cornerstone, permeating every aspect of our organization and deliverables. Our systems are not only geared for today but also for future scalability and flexibility, accommodating larger projects and complex challenges. We have built the framework for company we aspire to be.

## DIVERSIFIED

We harness the power of local talent, embracing diversity in all its forms. It's not just about where we operate; it's about who we are and the many niche and expert skill sets we bring to the table.

We are unique in our ability to unite exceptional biologists and project managers under the stewardship of a robust leadership structure. Our team benefits from strategic insight, fostering a unified vision and seamless coordination. Clients gain the advantage of SummitWest's capacity to scale - accessing a powerhouse team adept at hiring and managing diverse tasks across the Western USA.



**220+ PROJECT COMPLETED**  
**100% CLIENT SATISFACTION RATE**



# OUR CUSTOMIZED APPROACH

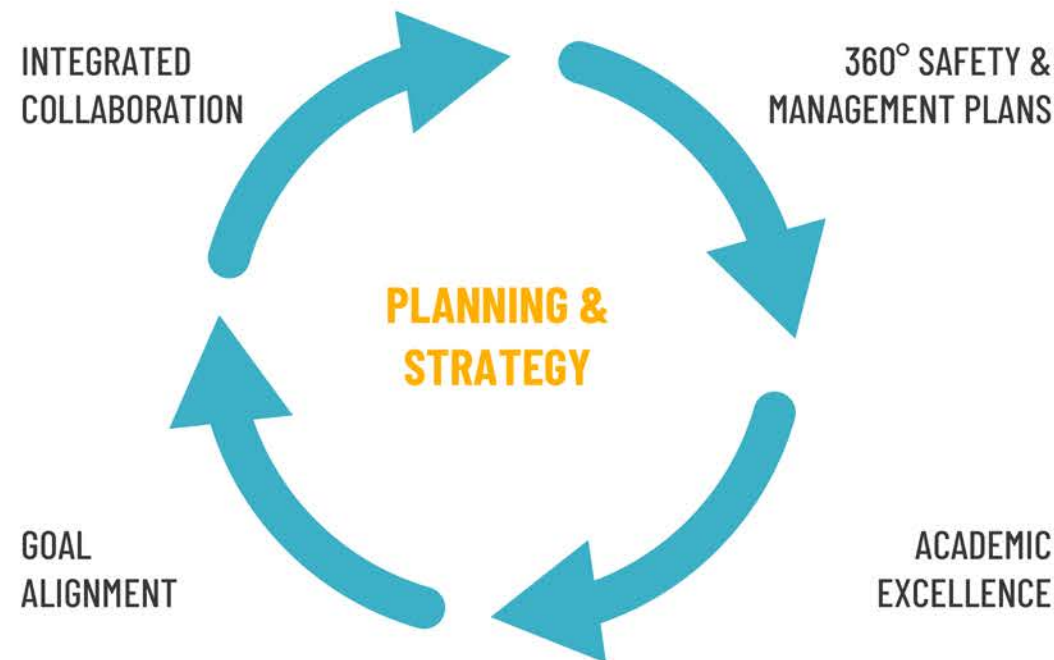
**Successful projects are the result of careful planning** and anticipation of what lies ahead, putting thoughtful consideration before decisive action.

**Our customized approach employs robust yet flexible systems to proactively plan for** longterm client goals. We foster deeper relationships with open communication on desired outcomes and procedures, ensuring client satisfaction and keeping goals on track. Structured systems start with accountability and are guided by technically rigorous methodology.

Collaboration and communication are also key to our success. Our fully integrated Point of Contact (POC) and Mentorship Programs ensure continual technical and administrative support to field teams and through our final product.

All of our work and products are overlaid on a lens of academic excellence; with an outsized number of PhDs on staff, our attention to detail elevates our product well above standard.

*We work closely with our clients to develop customized solutions that meet their specific needs, ensuring project compliance and timely delivery. Our commitment to helping clients achieve their sustainability goals is reflected in our comprehensive, cost-effective, and compliant solutions.*



“

SummitWest has done a great job mobilizing teams and individuals to meet our team’s demands. They are very responsive, are receptive to feedback, and continuously strive to improve their service.”

*Jason Ricks, Senior Consultant, Stantec*





# COMPANY PROFILE

SummitWest maintains a diverse portfolio but remains committed to our core services and expertise, avoiding overextension.

## LOCALIZED TALENT, 360° COVERAGE

SummitWest boasts a wealth of localized talent, ensuring a deep understanding of regional nuance, while delivering a comprehensive suite of services that cover diverse needs, making us a compact yet versatile organization capable of handling a wide range of environmental projects.



**Diversified Team:** We employ a diverse team of nearly 100 employees and operates in the western USA, specializing in California and Oregon.



**Dynamic and Disciplined:** SummitWest represents a unique blend of agility and diversity, offering clients swift responsiveness, whether it's staffing specialized talent or orchestrating expansive field operations. Regardless of location or project complexity, we ensure the same unwavering professionalism throughout.

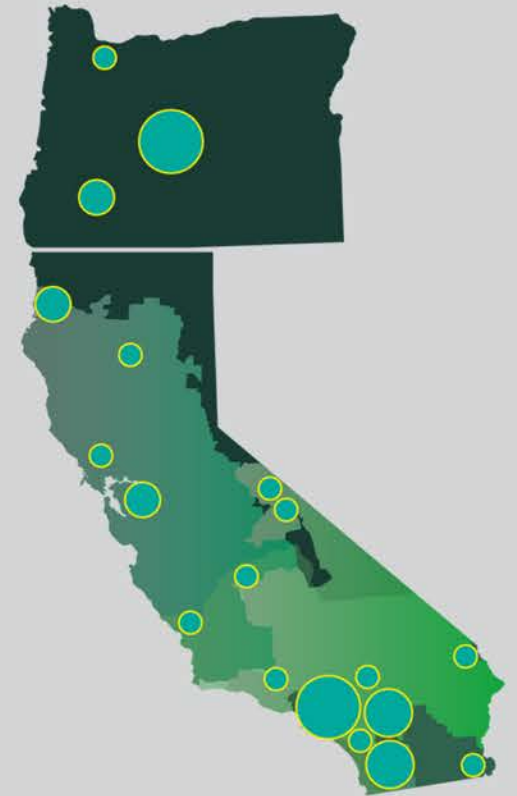


**Efficient Staffing:** Our localized presence enables us to be closer to our clients while operating efficiently through remote capabilities, ultimately reducing costs and enabling us to engage the most qualified and strategically positioned staff members.

## 100+ STAFF, SMARTLY LOCATED

SummitWest has helped more than 40 clients expertly staff projects, quickly and locally.

*Bubble size indicates staffing capacity.*



### Our team includes the following professionals:

- CDFW-certified and USFWS-permitted biologists
- Wildlife Biologists and Botanists
- Environmental Planners
- Permitting specialists
- Compliance monitoring and reporting specialists
- GIS professionals
- CEQA/NEPA environmental planners
- Wetland Scientists Licensed professional engineer
- SWPPP QSD/QSP professionals





# COMPANY STATISTICS

## BUSINESS DETAILS

- Founded in 2010
- \$15M+ in revenue since 2019
- 65 Full-time Equivalent Staff
- 100% Client Satisfaction
- 360° Support
- Full-Service Project Management
- DUNS: 849722496
- CAGE Code: 5WZ16

## CLIENT BASE

- Utilities, including SDG&E, PG&E, SoCalGas, LADWP, and SCE
- Federal, Military
- Private Development
- Renewable Energy
- Municipalities and Tribal Groups

## PERMITS & LICENSES

- 18 USFWS 10 (a) (1) (A) Recovery Permits
- 30+ sensitive species permits/MOUs
- Experience with 100s of listed plant species
- Licensed drone pilots
- Professional GIS certified staff

## CERTIFICATIONS

- CPUC WBE: #13030132
- CUCP (CALTRANS) DBE: #38681
- ODOT, DBE, ESB, WBE: #9404
- SANDAG BENCH

## NAICS CODES

### PROFESSIONAL, SCIENTIFIC, AND TECHNICAL SERVICES

- 541620: Environmental Consulting Services
- 541690: Other Scientific and Technical Consulting Services
- 541611: Administrative Management and General Management Consulting Services
- 541618: Other Management Consulting Services
- 541370: Surveying and Mapping (except Geophysical) Services
- 541990: All Other Professional, Scientific, and Technical Services

### HEAVY AND CIVIL ENGINEERING CONSTRUCTION

- 23713: Power and Communication Line and Related Structures Construction

### SUPPORT ACTIVITIES FOR AGRICULTURE AND FORESTRY

- 115310: Support Activities for Forestry

### UTILITIES

- 22112: Electric Power Transmission, Control, and Distribution Heavy and Civil Engineering Construction
- 23713: Power and Communication Line and Related Structures Construction

## SAFETY & INSURANCE

- Professional Liability: \$5,000,000
- Cyber Security: \$5,000,000
- Umbrella Liability: \$2,000,000
- Commercial General: \$2,000,000
- Pollution Liability: \$1,000,000
- Automobile: \$1,000,000
- Worker's Comp: \$1,000,000 per employee
- ISN certified A
- Avetta member
- SAP Ariba qualified



**Years in Business: 13**  
**Longest Client: 10 yrs**  
**Largest Project: \$2.5M/yr**



# PEOPLE FIRST

**At SummitWest, we put people first.** We believe that everyone is a stakeholder, including our staff. By prioritizing stakeholders, the best outcomes are not only achievable, but also sustainable.



**We hold safety as one of our most important responsibilities.** Our unwavering commitment to people and safety sets us apart and makes SummitWest a great place to work and a trusted partner for our clients.



**Staff mentorship & training.** Staff experience career growth, benefiting from our continuous investment. Through mentorship lasting the duration of their employment and opportunities to shadow experienced staff, we provide significant support, ensuring a reliable product and communication for our clients from start to finish.

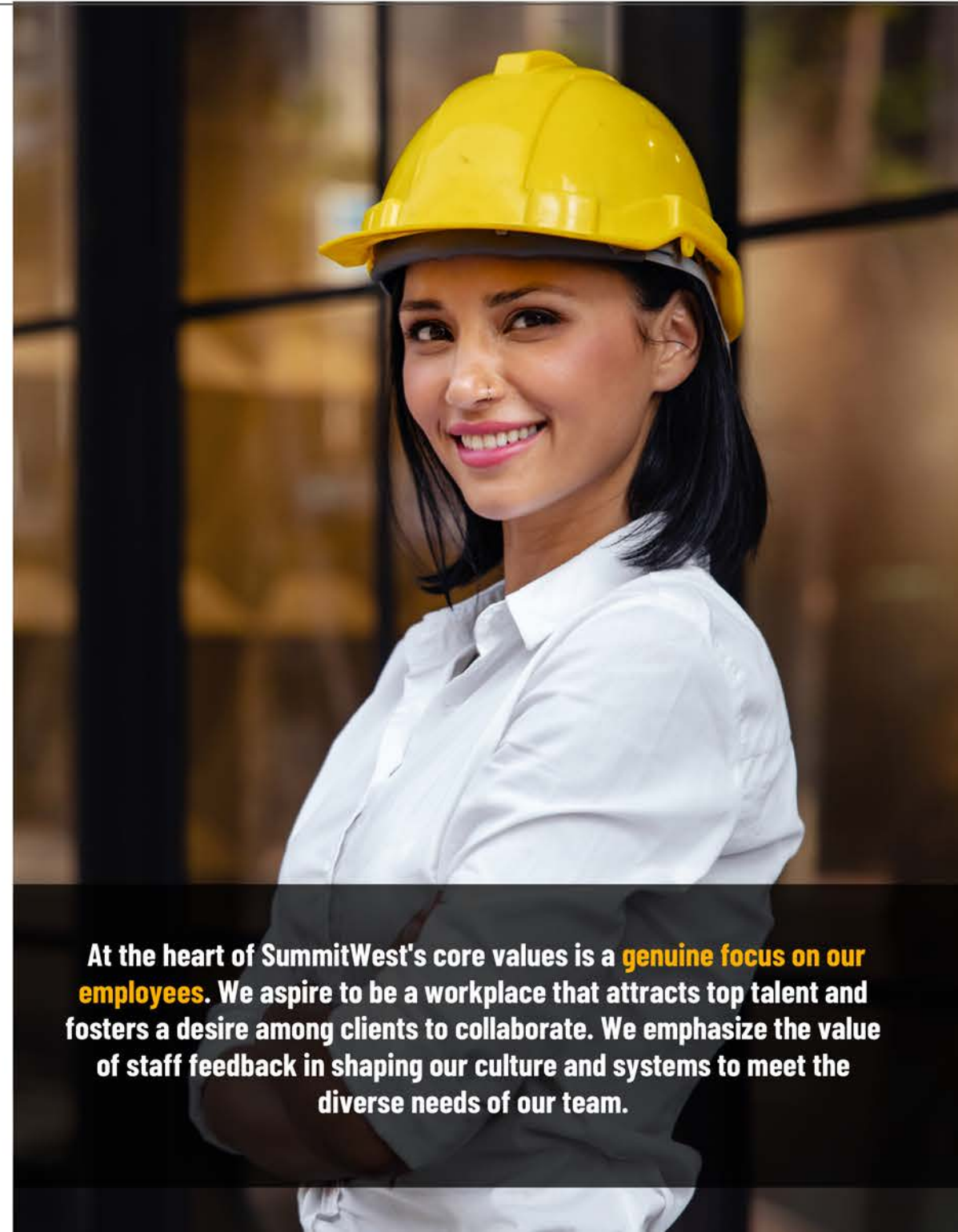


**Client Goals.** We align ourselves with our clients' goals to ensure optimal outcomes, no matter the size or complexity of the project.



**Our culture.** SummitWest is a fun and dynamic place to work as evidenced by our impressive 90% retention rate. We prioritize team happiness, measuring it alongside other key indicators such as profitability and staff utilization. Our positive company culture, fostered from leadership down, emphasizes accountability, integrity, and reliability.

- 20+** Days of shadowing offered per staff, per year
- 50** Average number of check-ins per staff, per year
- 1%** Regrettable annual turnover rate



**At the heart of SummitWest's core values is a genuine focus on our employees.** We aspire to be a workplace that attracts top talent and fosters a desire among clients to collaborate. We emphasize the value of staff feedback in shaping our culture and systems to meet the diverse needs of our team.



# WE'RE PROUD OF OUR SAFETY RECORD

We hold safety as one of our most important responsibilities. Our **unwavering commitment** makes SummitWest not just a great place to work, but also a trusted partner for our clients.

## ZERO OSHA REPORTABLE EVENTS

SINCE OUR FOUNDING IN 2010

### ZERO REPORTABLE EVENTS

Since our founding in 2010, we are proud to have had zero OSHA reportable safety events.

### FULL TIME SAFETY OFFICER

Our dedicated in-house safety officer oversees training sessions, conducts meetings, performs gear audits, and takes accountability in case of incidents or near-misses.

### OSHA COMPLIANT

Our OSHA compliant Safety program ensures a secure work environment, minimizes risks, and demonstrates our commitment to the well-being of our team and clients.

### FULL ACCOUNTABILITY

We demonstrate our commitment to the highest standards of safety and professionalism on every project.

360° OF SAFETY





# ENVIRONMENTAL PERMITTING SERVICES

At its core, every permitting project **revolves around risk assessment**. Our CEQA experts start by pinpointing these risks, conducting precise impact assessments, and formulating efficient mitigation strategies, saving valuable time and alleviating potential challenges and headaches along the way.

## WE UNDERSTAND COMPLEX PERMITTING

Environmental laws are complex and dynamic; a working knowledge of permitting and regulatory compliance is essential for any successful project, without exception in California.

Our multidisciplinary team excels in navigating the nuances of California's diverse environments. We offer a comprehensive range of services, spanning from initial studies and planning, to regulatory solutions. Leveraging our expertise, we determine the necessary level of environmental review, be it an exemption, negative declaration, or EIR. Furthermore, we conduct a thorough analysis of the environmental constraints pertinent to your project and guide it through the assessment and verification process.

To expertly navigate the complex regulatory terrain, we collaborate with governing agencies, facilitate permit applications, and streamline processes, ensuring compliance and efficiency.

Our team collaborates with you to identify risks, challenges, and tailored solutions.



**30+ YEARS OF COMBINED CEQA  
PERMITTING EXPERIENCE**

## OUR PROVEN APPROACH INCLUDES:



**Consistency.** Unwavering management and leadership is especially important when projects extend over months or years; we maintain a consistent and capable hand guiding your project throughout its journey. Your project's success will always remain at the core of our commitment.



**Being Proactive.** We proactively communicate with regulatory agencies, fostering successful permitting and smooth project progression. SummitWest's emphasis on relationship-building, coupled with our extensive project experience, ensures we keep clients and their project goals on the right track.



# PERMIT EXPERIENCE

With a diverse offering of permitting services, we are able to serve a wide range of clients from private developers to municipalities and large-scale utility and renewable energy projects.

## FEDERAL

- Federal Clean Water Act and Aquatic Resources
  - Wetland and Jurisdictional Water Delineations
- United States Fish and Wildlife Service (USFWS)
  - Federal Endangered Species Act Biological Assessments and Compliance
  - Threatened and Endangered Species Section 10(A) Recovery Permits
  - USFWS Consultation and Coordination
- Habitat Mitigation and Monitoring Plans

## CALIFORNIA

- California Department of Fish and Wildlife, Section 1602 Streambed Alteration Agreements
  - U.S. Army Corps of Engineers, Sec. 404 Dredge and Fill Permits
- California Regional Water Quality Control Board, Sec. 401 Water Quality Certifications GIS Mapping of Riparian Corridors Site Analysis, including Environmental Impact Reports/Statement
- California Department of Fish and Wildlife (CDFW)
  - Scientific Collecting Permits (SCPs), Sections 650 and 703
  - California Endangered Species Act (CESA) assessments and compliance
  - CDFW Consultation, Coordination, and Reporting
- California Environmental Quality Act (CEQA)/ National Environmental Policy Act (NEPA)
  - Prepare and process CEQA/NEPA documents
  - Environmental Due Diligence Reports
  - Environmental Assessments (EAs)
  - Categorical Exemptions (CATEX)





# WETLAND DELINEATIONS & PERMITTING

Our team of highly skilled wetland scientists and environmental professionals excel in **wetland delineations and jurisdictional determinations** and offer comprehensive solutions to ensure projects meet regulatory compliance requirements.

Our Wetlands Delineation and Permitting Program works in lock-step with our PM and GIS programs, ensuring efficient project handling, and perfected georeferenced deliverables. We utilize state-of-the-art methodologies to accurately map wetland boundaries, identify jurisdictional wetlands, and assess their ecological characteristics.

No two delineations are the same. We carefully assess all project specific construction and land access needs along with the individual topography and hydrology of the site to determine our JD approach. We work to achieve compliance and avoid all costly delays, penalties, and reputational risks for failure to obtain the necessary permits or adequately assess environmental impacts. Your success is our success.

## CAPABILITIES

SummitWest is skilled in the following Wetland delineation and permitting services:

- Wetland permitting & planning for NEPA & CEQA
- Wetland delineations
- Jurisdictional determinations
- Wetland drone mapping
- Wetland restoration
- Wetland botanical expert surveys (including vernal pools)
- Wetland Identification and Mapping
- Vegetation Surveys
- Soil Analysis
- Hydrological Assessments
- Functional Assessments
- Wetland Characterization Reports
- Regulatory Compliance Support
- Wetland Monitoring and Management Plans

Our experts have an in-depth **knowledge of federal, state, and local waters regulations**, including:

- **NEPA** (National Environmental Policy Act)
- **CEQA** (California Environmental Quality Act)
- **The Clean Water Act** and associated permits; especially those specific to California:
  - **Section 401, 404 and 1600** permits.

**Our team of California experts have more than 50+ years of combined experience conducting wetlands assessments and aquatic resource delineations throughout California and the Western USA.**





# BASELINE, BIOLOGICAL, & CONSTRUCTION COMPLIANCE STUDIES

**SummitWest provides the baseline biological studies needed for project success.** SummitWest's comprehensive study designs, species consultations, and data-management plans ensure a scientifically sound project while complying with environmental protection measures.

## BIOLOGICAL RESOURCES DESKTOP SUPPORT

Our qualified team provides the biological desktop support and analysis necessary in order to determine biological constraints and associated mitigation measures prior to construction, field work or project planning phases.

Additionally, SummitWest aids clients in comprehending regulatory obligations and engages in consultations with public agencies, guaranteeing a well-informed and smooth project commencement.



We have performed over 7,000 hours of desktop analysis and support. This work includes biological resources screening and biological constraints reports, across the board quality control, large project management, construction intake and GIS mapping and analysis.



We have performed more than five hundred deteriorated pole biological and wetland/waters desktop reviews on both private and public lands such as the United States Forest Service (USFS) and Bureau of Land Management (BLM).



We have experience producing a multitude of Pre-activity Survey Reports (PSRs), Biological Constraints Reports (BCRs) and Analysis (BCAs), ranging from minimal to complex.

## CAPABILITIES

- Sensitive Species Inventories and Biological Desktop Reviews
- Biological Constraints Reports (BCRs) and Analyses (BCAs)
- Pre-activity Survey Reports (PSRs)
- Environmental Requirement Planning
- Section 7 Endangered Species Consultations
- Weed Abatement Planning
- Study Design and Statistical Analysis including GIS Habitat Mapping and Project Preparation
- Environmental Awareness Training (WEAP & Community Outreach Education)
- Environmentally Sensitive Area Fencing and Flagging
- Covered Conductor Project (CCP) Management for SCE
- Pre and Post Construction Reports / Job Walks
- Lead Environmental Inspector Reports and Management
- Habitat Mitigation, Monitoring, and Reporting Plans (HMMP)
- Mitigation and Restoration Summary Reports

**OVER 100,000 HOURS OF UTILITY SUPPORT & COORDINATION SINCE 2019**



# BIOLOGICAL SURVEYS & RESOURCE MONITORING

We specialize in special status plant and animal surveys, habitat assessments, and construction monitoring. Our qualified team of permitted biologists and wetland scientists can map, model, or monitor required natural resources to achieve environmental compliance.

With a wide range of rare plants and wildlife, the SummitWest team excels in natural resource surveying and monitoring. Understanding all sides of the process, we pride ourselves on being a capable liaison between construction and environmental constraints. Our field and GIS teams collaborate closely, ensuring results of fieldwork are immediately usable, minimizing the need for extensive post-processing.

**3.5**

## LONGEST PROJECT

Our longest project was a 3.5 year urban planning expansion study.

**68**

## SPECIES QUALIFICATIONS

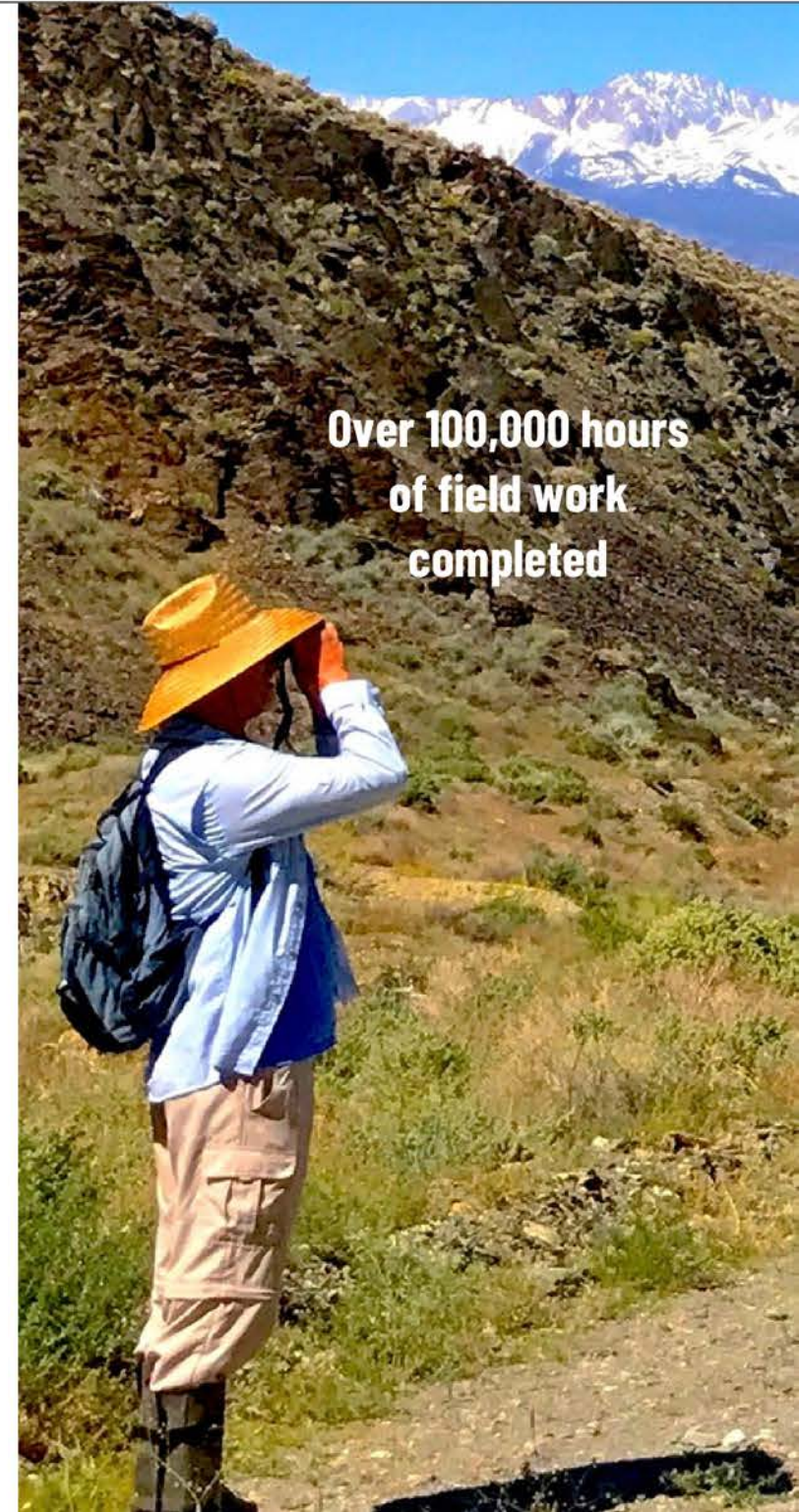
Permits and experience with over 65 listed California animals and hundreds of plant species.

**100%**

## CLIENT SATISFACTION

Of the 100s of projects we have completed to date, all have been to the satisfaction of our clients.

**Over 100,000 hours  
of field work  
completed**





# SURVEY CAPABILITIES

Our team has extensive experience with special-status species including the environmental regulations, surveying and reporting requirements, their habitats and ecology, as well as best management practices for avoiding take or harm. SummitWest can also offer guidance when take is unavoidable and presence is detected.

## EXPERIENCE & OFFERINGS

- General Habitat Assessments & Surveys
- General Biological Surveys
- Nesting Bird Surveys
- Botanical and Wildlife Surveys
- Vegetation Classification and Mapping
- Nonnative Plant Surveys
- Wildlife Movement and Corridor Studies
- Protocol Threatened, Endangered, and Sensitive Species Surveys
- GIS Mapping
- Environmental Compliance Monitoring & Pre- and Post-Construction Surveys
- Aerial (Drone) Surveys
- Worker Environmental Awareness Program (WEAP) Training
- Resource Agency Coordination
- Ecological Restoration Planning and Implementation; Mitigation and Management Plans
- Best Management Practice Monitoring
- Emergency Projects
- Community Outreach

## CALIFORNIA SPECIES PERMITS HIGHLIGHTS

- 18 USFWS 10 (a) (1) (A) Recovery Permits (For a full list of species please visit our website)
  - Highlighted special status species for which we hold permits include:
    - California Gnatcatcher
    - Light Footed Clapper Rail
    - San Bernardino and Stephen's Kangaroo Rats
    - Mojave Ground Squirrel
    - Desert Tortoise
    - California Red-legged Frog
    - Tidewater Goby
    - Vernal Pool Fairy-Shrimp
- Experience surveying for 68 additional sensitive status wildlife species hundreds of rare plants ([More here](#))

**SummitWest staff can cover sensitive species surveys in California, Oregon, Arizona and Nevada.**

We ensure our clients **receive expert, local support** rather than outsourcing unqualified team members from distant locations. Our geographical distribution of staff is one of our most significant assets, extending across California and the western USA. Our staff are locally specialized in the endemic species and habitats adjacent to their homes, a vital advantage towards effective surveying and regional comprehension of natural resource requirements.



# RARE PLANT SURVEYS & VEGETATION MAPPING

SummitWest boasts a **dedicated team of expert botanists with extensive experience** across California's diverse habitats, ranging from the coastal dunes of San Diego to the Sierra forests and the unique desert ecosystems. Furthermore, our staff possess valuable botanical insights from regions beyond, including the Pacific Northwest, Nevada, Arizona, and Utah.

Botany isn't merely a service we provide; it's the very foundation on which we built our journey back in 2008. Our founder's initial work and true passion revolved around botany, collaborating with Jon Rebman of the San Diego Natural History Museum on Camp Pendleton for rare plant surveys and even witnessing the identification of new plant species.

Our team has successfully completed over 50 rare plant survey projects, of which 22 were large-scale, long-term projects covering a diverse range of habitats for large clients such as Google, SCE, SoCalGas, USFS, SDG&E, as well as regional conservation groups, tribes, and municipalities.

Our team is also well versed in invasive species mapping, restoration monitoring, and speciality habitats such as vernal pools and wetlands.



OVER 50 RARE PLANT SURVEYS  
SUCCESSFULLY COMPLETED



# PROJECT MANAGEMENT

SummitWest has a unique focus on the logistics of project management. With dedicated project managers, environmental coordinators, schedulers, and a full time safety officer, we provide full service project management to support environmental projects of all sizes.



**Logistics.** In-house schedulers and environmental coordinators optimize crew staffing and project support, based on our biologists certifications and locations, facilitating effective support for projects of all sizes and durations.



**Collaboration.** All projects are assigned a dedicated Project Manager and Project Coordinator to ensure seamless integration internally and externally. Management staff have interdisciplinary experience and are skilled biologists, enabling clear and fully-informed communication between surveyors, monitors, construction crews, and clients.



**Data Management.** SummitWest excels in data management, from internal safety protocols, project management guides to external deliverables, including data sheets, GIS, and reports. We're empowered to deliver exceptional results that exceed expectations, thanks to our commitment to innovation and precision.



**Accountability.** We will own it all the way through, so that you don't have to worry. We will communicate clearly and often without being a pest.



**Goal Alignment.** We identify your needs, systems, and expectations, and adapt our programs to lockstep with your own. We've fine-tuned the art of partnership, making your experience seamless and rewarding.



**SummitWest excels in data management, tracking 10,000+ surveys annually.** Our logistics, cutting-edge technology, and automated data management processes form the backbone of our operations. These pillars boost efficiency and elevate our capabilities beyond our size.



# PROJECT MANAGEMENT SERVICES

SummitWest not only provides management for our own projects, but we also manage large multi-stakeholder projects for our clients — removing headaches and streamlining services. Our managers integrate with existing teams, offer leadership, and maintain autonomy, proactively identifying and solving issues.

## WE PROVIDE NEW CLIENTS WITH:

- Intake meetings to determine client goals, expectations, and systems
- Client Welcome Onboarding Guide to SummitWest project management procedures
- Project planning and timeline of expectations and deliverables
- Frequent check in-meetings for the duration of the project
- Project-specific management guides, contact charts and Gantt charts
- Dedicated scheduling team
- Project specific Job Hazard Analyses
- Safety Training sessions tailored to each client and their unique project
- Internal QC of all deliverables

## CAPABILITIES

- Program management, Development, Implementation
- Program Coordination and Scheduling among field crews, resource agencies and clients
- Project database management
- Technical report and Environmental Document Preparation
- QA/QC and document peer review for third parties
- Worker Safety Training and Compliance

**Our success lies in our strong data management, clear communication and transparency with clients, full accountability, and internal and external collaboration.**



# GEOGRAPHIC INFORMATION SERVICES

At SummitWest, we offer a diverse range of GIS-based services, catering to various project requirements. Our expertise extends to specialized GIS projects, such as climate change and habitat mapping. But we go even further, seamlessly integrating GIS into comprehensive, full-service projects.

## GIS ANCHORS ALL PROJECTS:

From wetlands delineations to daily survey reports; vegetative community mapping to sensitive status species mitigation plans - GIS is a cornerstone to project success.

Our team of GIS specialists and technicians is rapidly deployed to provide biofieldmap data collection forms, produce basic and complex resource maps, calculate acreages and coverage of various habitat types and project-specific field prescriptions, and to generate complex attribute tables, geodatabases, and interactive story maps.

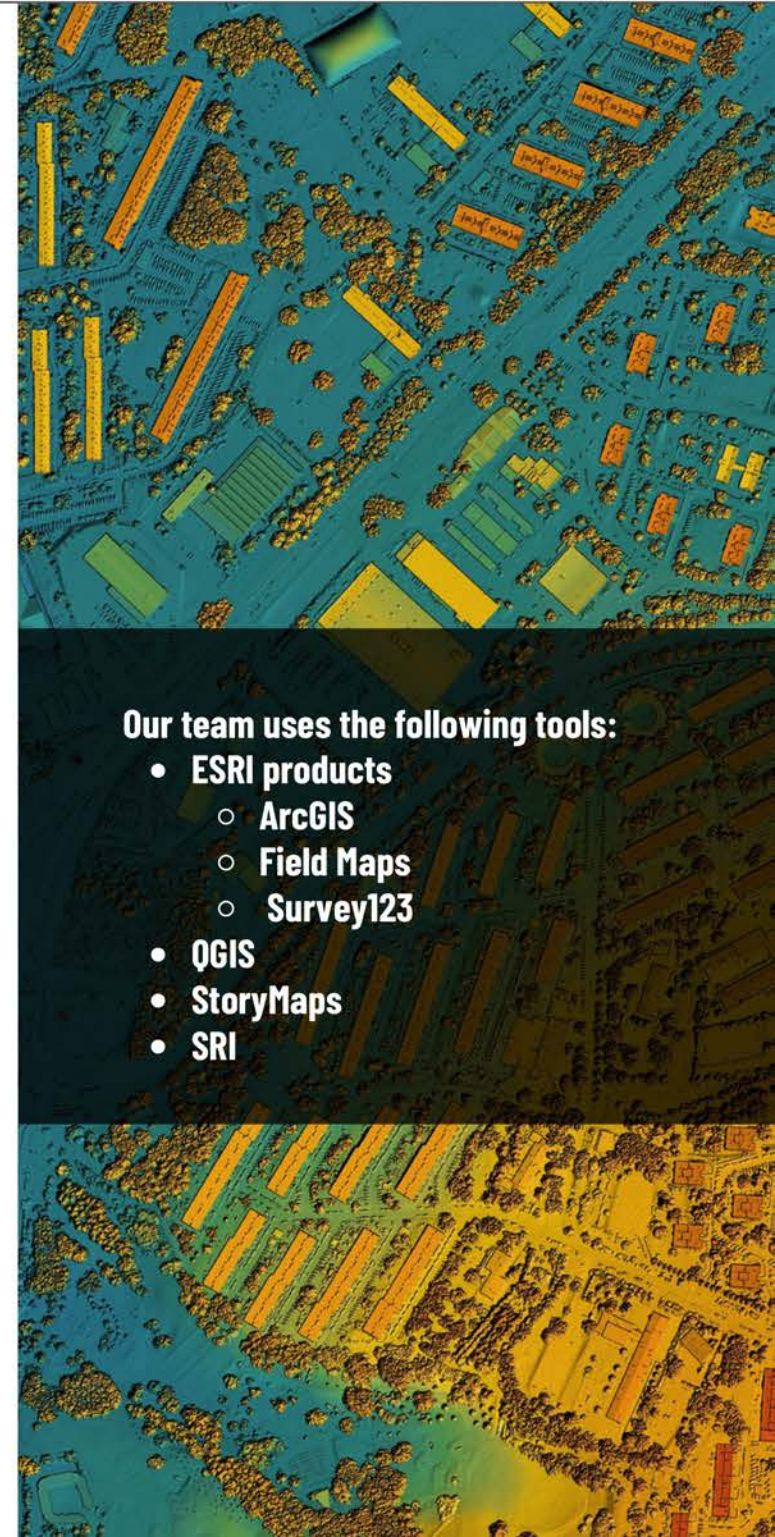
We are also skilled at conducting larger, more computational GIS-based projects and can use vast databases to model and predict climatic impacts.

## CAPABILITIES

- Spatial Analysis & Impact Analysis
- Natural resource Mapping
  - Water resource mapping
- Field Data Analysis
- Remote Sensing
- Attribute Tables
- Georeferenced Figures
- Data Integration & Database Creation
- Climate Change Modeling
- Wildfire Risk
- Sub-Meter GPS Mapping
- Drone Imagery Services

## Our team uses the following tools:

- **ESRI products**
  - ArcGIS
  - Field Maps
  - Survey123
- QGIS
- StoryMaps
- SRI





# DRONE SURVEY PROGRAM

Along with industry standard site reconnaissance and habitat assessment techniques, our team employs drones to perform large-landscape assessment and resource mapping with fine precision, imaging, and GIS data collection. Our drone program allows for natural resource mapping across rugged terrains and within narrow timeframes and tight budgets.

By combining drones with GIS, our clients benefit from enhanced data collection, analysis, visualization, and decision-making capabilities. Drones enable efficient and cost-effective data acquisition, while GIS provides the framework for processing, analyzing, and integrating the collected data into meaningful spatial information.



## DRONES OFFER ACCESSIBILITY, ACCURACY, & SPEED

- **High Resolution Data**
- **Increased Safety**
- **Enhanced Decision-Making**

SummitWest has licensed drone pilots on staff and can perform drone monitoring and mapping services.



# CLIMATE CHANGE STUDIES

SummitWest provides cutting edge insights, risk mitigation and innovative climate change strategies.

We provide unparalleled expertise, dedication, and commitment to delivering superior Climate Change services tailored to your specific environmental needs. With our extensive experience in environmental consulting, we understand both the complexities of climate change and the goals our clients strive to achieve amidst this changing landscape.

## CAPABILITIES

*We offer a wide range of climate change services, including:*

- Climate action plans
- Climate resiliency and sustainability plans
- Climate refugia studies
- Climate risk assessment
- Climate adaptation planning & strategy development
- Climate mitigation planning
- Vulnerability and risk assessment
- General plan and specific plan adaptation policies
- GIS-based vulnerability mapping
- Wildfire protection plans
- Sea-level rise constraints analysis
- Adaptive management planning for habitat conservation
- Greenhouse gas emissions
- Functional assessments
- Ecological valuations
- Emissions Reduction Strategies & policy development
- Sustainability Planning and Reporting
- Carbon sequestration calculations
- Carbon Offsetting and Renewable Energy Solutions
- California Air Resources Board regulatory review
- Regional transportation planning and Sustainable Communities Strategies (SB 375)
- CEQA and NEPA strategy and analysis

**Climate refugia studies offer valuable insights into areas that can serve as crucial safe havens for species and ecosystems amidst the increasing effects of climate change**

### Greenhouse Gas Emissions & Analysis

SummitWest proudly collaborates with greenhouse gas and climate change pioneer and esteemed expert, [Michael Hendrix](#), to deliver unparalleled services to our valued clients. SummitWest's Greenhouse Gas Emissions and Analysis team works to inform decision-making, prioritize emission reduction efforts, shape climate-related policies, assess climate risks, and engage stakeholders in collective action.





# DRY SEASON FAIRY SHRIMP SOIL PROCESSING & CULTURING

We specialize in providing comprehensive surveys, including both wet and dry season assessments, to ensure your projects align with regulatory compliance requirements.

SummitWest founder Chez Brungraber is one of the few permitted individuals worldwide authorized by the U.S. Fish and Wildlife Service (USFWS) to perform wet *and* dry season surveys for the listed fairy shrimp species in California.

## OUR EXPERTISE: DRY SEASON LAB

Our laboratory is meticulously designed to streamline soil processing while eliminating any risk of cross-contamination, minimizes the likelihood of algal growth, water evaporation, and significant fluctuations in aquatic conditions during the maturation of the shrimp, compromising the reliability of results.

## OUR LAB BOASTS STATE-OF-THE-ART, 100% CUSTOMIZED TOOLS

- Soil fines separators
- Tailor-made depth Number 25, 40, 70 and 200 USA standard testing sieves, ASTM E11 specification
- Customized filtration system
- Sterile glass beakers
- Air stone bubblers



## CAPABILITIES

SummitWest provides the following services:

- Vernal pool habitat assessment
- Vernal pool botanical studies
- Wet season fairy shrimp surveys
- Dry season fairy shrimp surveys including processing and culturing
- Vernal pool mapping
- Regulatory Compliance Support
- Mitigation Planning

Surveys for the following species are offered

- *Branchinecta conservatio*; Conservancy fairy shrimp (endangered)
- *Branchinecta longiantenna*; Longhorn fairy shrimp (endangered)
- *Branchinecta lynchi*; Vernal pool fairy shrimp (threatened)
- *Branchinecta sandiegonensis*; San Diego fairy shrimp (endangered)
- *Lepidurus packardii*; Vernal pool tadpole shrimp (endangered)
- *Streptocephalus woottoni*; Riverside fairy shrimp (endangered)



## DID YOU KNOW?

If performing protocol-level fairy shrimp surveys, the U.S. Fish and Wildlife Service (USFWS) mandates either two wet season surveys or one wet and one dry season survey.





WE PIONEER STRATEGY.

## CONTACT US

We are looking forward to supporting you on your next project.

### PHONE

619-796-5564

### EMAIL

[info@summitwestenv.com](mailto:info@summitwestenv.com)

### HEADQUARTERS

Bend, Oregon