



# SUMMIT WEST

## ENVIRONMENTAL, INC.

STATEMENT OF QUALIFICATIONS





# INTRODUCTION

## WE ARE A UNIQUE TEAM SOLVING TODAY'S COMPLEX ENVIRONMENTAL CHALLENGES.

SummitWest Environmental, Inc. (SummitWest) offers full project life cycle services for environmental projects. We are unique in that we uphold academic quality standards through our highly collaborative and transparent team.

Founded by Chez and Griffin Brungraber in 2010 in San Diego, SummitWest has since grown into a respected firm representing the environmental consulting space.

During our 14 years in business, we have redefined excellence and accountability in small consulting firms. We merge academic quality standards to the nimble and fast-paced consulting world. We have efficient, innovative, caring, scientific, quality-focused staff with PhDs in leadership.

## SERVICE HIGHLIGHTS

- ▼ Environmental Documentation and Permitting (CEQA/NEPA; Wetland Delineations & Jurisdictional Determinations)
- ▼ Biological Services & Surveys (including Desktop, Monitoring, Restoration, Mitigation)
- ▼ Cultural Resources Management
- ▼ GIS & Drones
- ▼ Project Management
- ▼ Environmental Services (SWPPP, Emergency Services, Climate Change)

## CONTACT DETAILS



[summitwestenv.com](https://summitwestenv.com)



[info@summitwestenv.com](mailto:info@summitwestenv.com)



(619) 796-5564



# WHY CHOOSE SUMMITWEST:

## LASTING PARTNERSHIPS

Our relationships continue long after the project has been completed; our partnerships with clients and subject matter experts allow us all to grow and meet new challenges head on. We truly believe that we are better as the sum of our parts, and that we need more collaboration in our space to tackle what is ahead. We are proud to have consistently exceeded client expectations over our 14 years in service.

## RESPONSIVENESS

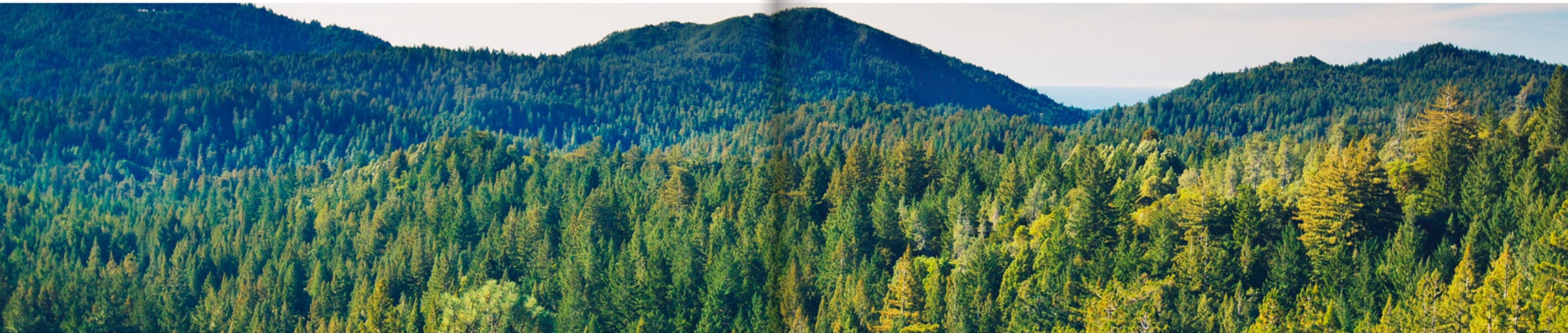
Working in the environmental industry things are hardly predictable, and one of our core values is flexibility. We know that in order to get the job done and done well, we must adhere to principles of change and flow. We are able to quickly staff projects as-needed and mobilize eager staff across counties and states. Our rapid training programs also ensure efficiency and quality in the field - even on rush orders.

## HEAVY LIFTING

SummitWest may still be a small firm, but client's appreciate the diversity of services we offer and locations we serve, all under one leadership system, creating a cohesive, collaborative whole that makes us a great partner.

When meeting project needs, any technical gaps are filled through quick mobilization of our large network of subconsultants and Subject Matter Experts, enhancing our ability to meet the full spectrum of needed services and still ensuring top-notch deliverables. This diversity of services provides an outsized impact for a company of our size, making us a fantastic partner as a sub and a prime.

AT SUMMITWEST, ACCOUNTABILITY IS OUR TOP CORE VALUE





**Our mission is to pioneer  
strategies for the environment.**

To uphold our mission, we employ a team of  
top innovative talent who we retain by  
providing a solid and diverse foundation of  
service offerings across the western USA.

*We seek partnerships and projects that  
further our mission.*





# COMPANY PROFILE

SummitWest is a small, woman-owned (DBE) company that packs a punch when it comes to services offered, geographic regions covered, and flexibility.

## 50 FULL TIME STAFF

We averaged 44 full-time equivalent staff in 2024, but fluctuate to over 100 total staff during the busy field season months.

## 15M IN REVENUE SINCE 2019

SummitWest can handle projects both large and small, and is well capitalized to staff up when needed for a project or a client. Just ask!

## YES, WE PRIME!

We help clients meet their DBE goals while also leading contracts, allowing us to handle more administrative tasks and apply our project management expertise.

## WE MANAGE OUR OWN TEAM

SummitWest's schedulers, coordinators, and project managers handle all project logistics, ensuring a smooth process for our partners.

## STRATEGIC PARTNERSHIPS

We look for partners with year-round workflows to maintain our amazing team with full time stability.

## 14 YEARS IN BUSINESS

Since our founding in 2010, we have enjoyed 14 great years!

**WBE, DBE Certified in CA & OR**



## BUSINESS DETAILS

- Founded in 2010
- \$15M+ in revenue since 2019
- 50 Full-time Equivalent Staff
- 100% Client Satisfaction

## CLIENT BASE

- Utilities, including SDG&E, PG&E, SoCalGas, LADWP, SCE, Arcadian Infracom, and Idaho Power
- Federal, including BLM, USFS, and DOD
- Private Development
- Renewable Energy
- Municipalities, Counties, and Tribal Groups
- Conservation Districts and Non-Profits
- CalTrans

## CERTIFICATIONS

- CPUC WBE: #13030132
- CUCP (CALTRANS) DBE: #38681
- ODOT, DBE, ESB, WBE: #9404
- SANDAG BENCH

DUNS: 849722496  
CAGE Code: 5WZ16



*Phacelia campanularia*  
Joshua Tree, CA  
© Chez Brungraber



# COMPANY PROFILE

## NAICS CODES

### PROFESSIONAL, SCIENTIFIC, AND TECHNICAL SERVICES

- 541620: Environmental Consulting Services
- 541690: Other Scientific and Technical Consulting Services
- 541611: Administrative Management and General Management Consulting Services
- 541618: Other Management Consulting Services
- 541370: Surveying and Mapping (except Geophysical) Services
- 541990: All Other Professional, Scientific, and Technical Services

### HEAVY AND CIVIL ENGINEERING CONSTRUCTION

- 23713: Power and Communication Line and Related Structures Construction

### SUPPORT ACTIVITIES FOR AGRICULTURE AND FORESTRY

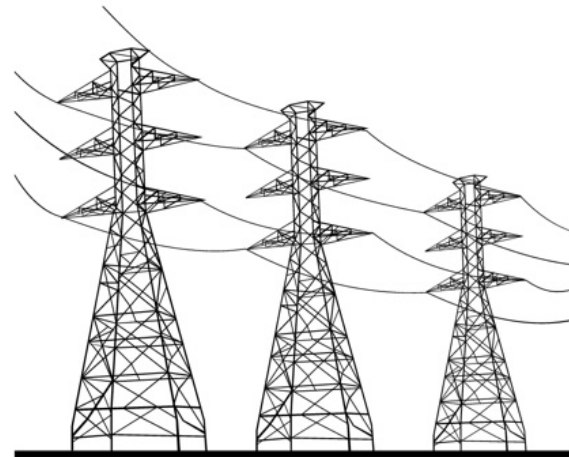
- 115310: Support Activities for Forestry

### UTILITIES

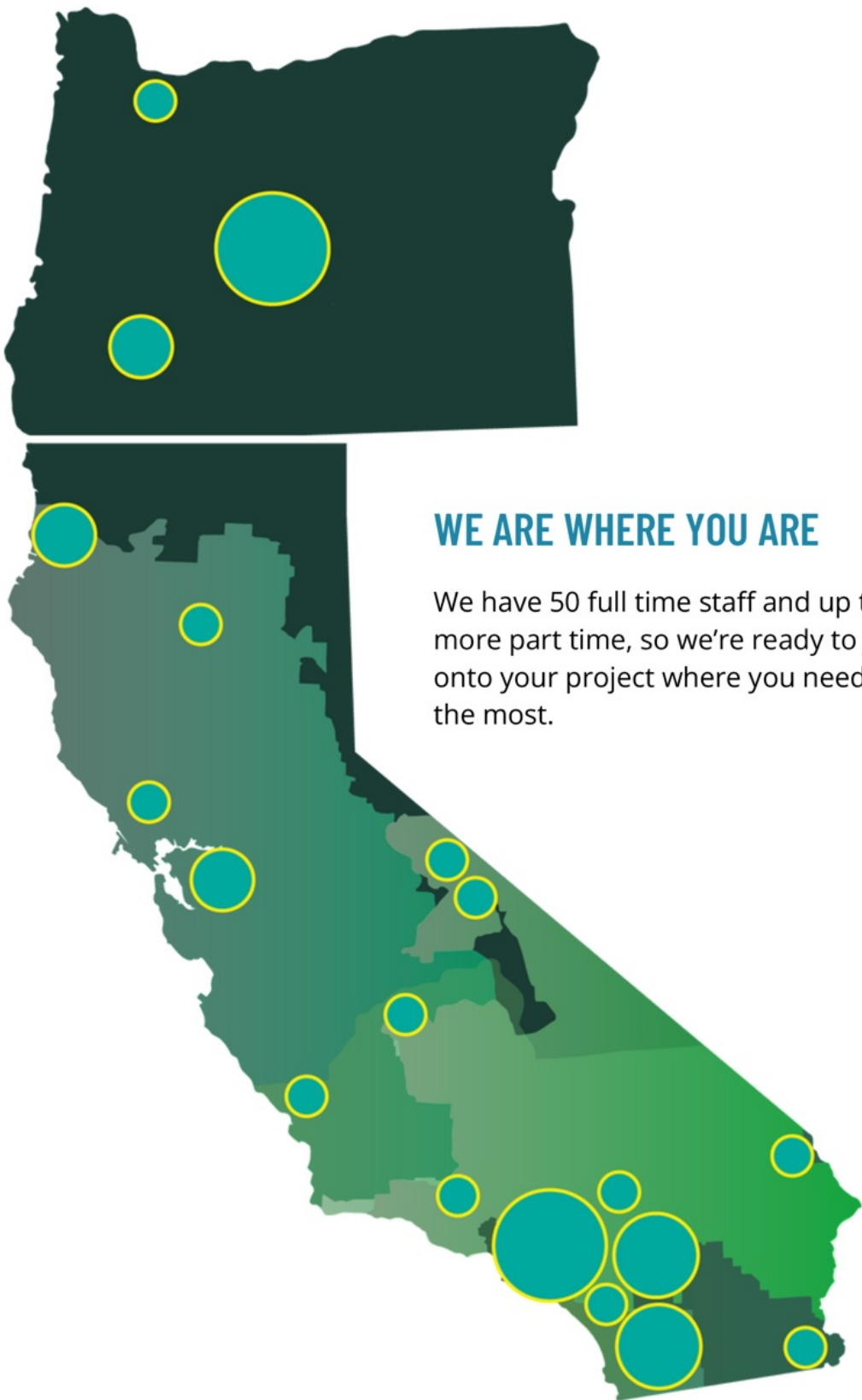
- 22112: Electric Power Transmission, Control, and Distribution Heavy and Civil Engineering Construction
- 23713: Power and Communication Line and Related Structures Construction

## PERMITS & LICENSES

- 18 USFWS 10 (a) (1) (A) Recovery Permits
- 30+ sensitive species permits/MOUs
- Experience with 100s of listed plant species
- Licensed drone pilots
- Professional GIS certified staff
- SWPPP QSD / QSP professionals
- California Civil PE



## LOCATIONS



### WE ARE WHERE YOU ARE

We have 50 full time staff and up to 50 more part time, so we're ready to jump onto your project where you need us the most.



# WE'RE PROUD OF OUR SAFETY RECORD

We hold safety as one of our most important responsibilities. Our unwavering commitment makes SummitWest not just a great place to work, but also a trusted partner for our clients.

I am incredibly proud to lead this remarkable team of talented individuals here at SummitWest.

We look out for one another - whether during training, in the field, or just on the road. The safety of our team, and ensuring they return home every night, is the most important thing we can offer to our staff and clients alike.

We go the extra mile in regards to safety training, safety tracking devices, and accountability.

*Chez Brungraber, CEO*



# ZERO OSHA REPORTABLE EVENTS

## SINCE OUR FOUNDING IN 2010

### ZERO REPORTABLE EVENTS

Since our founding in 2010, we are proud to have had zero OSHA reportable safety events.

### FULL TIME SAFETY OFFICER

Our dedicated in-house safety officer oversees training sessions, conducts meetings, performs gear audits, and takes accountability in case of incidents or near-misses.

### OSHA COMPLIANT

Our OSHA compliant Safety program ensures a secure work environment, minimizes risks, and demonstrates our commitment to the well-being of our team and clients.

### FULL ACCOUNTABILITY

We demonstrate our commitment to the highest standards of safety and professionalism on every project.

## 360° OF SAFETY



## SAFETY & INSURANCE

- Professional Liability: \$5,000,000
- Cyber Security: \$2,000,000
- Umbrella Liability: \$5,000,000
- Commercial General: \$4,000,000
- Pollution Liability: \$1,000,000
- Automobile: \$1,000,000
- Worker's Comp: \$1,000,000 per employee
- ISN certified A
- Avetta member
- SAP Ariba qualified



# INDUSTRIES



**UTILITY: DISTRIBUTION, PIPELINE**



**FEDERAL: USFS, BLM, MILITARY**



**LOCAL GOVERNMENT**



**PRIVATE**



**RENEWABLE: WIND, SOLAR**



**TRANSPORTATION**



**FEMA/ EMERGENCY**





# SERVICES

SummitWest specializes in providing expert environmental consulting services in natural resource surveys and documentation, CEQA / NEPA, permitting, and project management.

## ENVIRONMENTAL DOCUMENTATION & PERMITTING SERVICES

- Federal / California (Transportation, Utilities)
- CEQA / NEPA (EIR, EIS, EAs, CATEXs, IS/MNDs, Section 106)
- Waters (401, 404, 1600, CDP)
- Wetland Delineations & Jurisdictional Determinations



## BIOLOGICAL SERVICES & SURVEYS

- Pre-planning (Site Assessments, Pre-Project Surveys)
- Desktop Reviews and Reports
- Construction Compliance
- Wildlife Surveys; Habitat Assessments & Mapping
- Endangered & Special Status Species
- Botany Surveys; Vegetative Community Mapping
- Mitigation & Restoration



## CULTURAL RESOURCES

- Historic and Prehistoric Archaeology
- Cultural Resources Surveys & Construction Monitoring
- Management Plans, Testing and Data Recovery Plans, Research and Sampling Designs
- California Historical Resources Information System (CHRIS)
- Phase I (Survey), Phase II (Evaluation), and Phase III (Mitigation/Excavation) investigations
- Tribal Consultation



## GEOGRAPHIC INFORMATION SERVICES (GIS)

- Sub-meter GPS Mapping
- Spatial Analysis & Impact Analysis
- Drone Imagery Services
- Map and Geodatabase Production



## PROJECT MANAGEMENT

- Data Management
- Logistics & Coordination
- Collaboration
- Oversight of Project Timelines, Budgets, and Deliverables



## ENVIRONMENTAL SERVICES

- SWPPP
- Emergency Services
- Climate Change Studies
- Climate Action Plans
- Climate Refugia





# ENVIRONMENTAL DOCUMENTATION & PERMITTING SERVICES

At its core, every permitting project **revolves around risk assessment**. Our permitting experts start by pinpointing these risks, reviewing CEQA / NEPA environmental documents, conducting precise impact assessments, and formulating efficient mitigation strategies, saving valuable time and alleviating potential challenges and headaches along the way.

Environmental laws are complex and dynamic; our working knowledge of permitting and regulatory compliance allows us to ask the right questions. We collaborate with governing agencies, facilitate permit applications, and work directly with our clients to identify risks, challenges, and provide tailored solutions.

## CAPABLE NAVIGATION OF COMPLEX ENVIRONMENTAL DOCUMENTATION & PERMITTING

SummitWest's experienced environmental team knows the unique parameters of various counties and localities in California to ensure projects get the detailed attention they need. SummitWest is committed to staying on top of the evolving regulatory landscape to ensure that your projects are executed smoothly and swiftly.

From CEQA Environmental Assessments and Categorical Exemptions and NEPA Initial Studies/Mitigated Negative Declarations, to the US Army Corp of Engineers water permits and US Fish and Wildlife and California Department of Fish and Wildlife-required permits, SummitWest can smoothly handle the full range of environmental documentation and permitting necessary to keep your project in compliance.

## 30+ YEARS OF COMBINED CEQA / NEPA EXPERIENCE

### OUR PROVEN APPROACH INCLUDES:



**Consistency.** Continuity is paramount when projects extend over months or years; we maintain a consistent and capable hand guiding your project throughout its journey.



**Proactive Mindset.** We stay ahead: communicating with regulatory agencies fosters successful permitting and smooth project progression. SummitWest's emphasis on relationship-building, coupled with our extensive project experience, ensures we keep clients and their project goals on the right track.



## CALIFORNIA ENVIRONMENTAL QUALITY ACT (CEQA) / NATIONAL ENVIRONMENTAL POLICY ACT (NEPA)

- Categorical Exemptions (CATEX)
- Environmental Assessments (EA)
- Environmental Impact Statements (EIS)
- Negative Declarations (ND)
- Initial Studies/Mitigated Negative Declarations (IS/MND)
- Environmental Impact Reports (EIS)

## WATERS PERMITTING SERVICES

- United States Army Corps of Engineers (USACE) Clean Water Act (CWA) Section 404
- Regional Water Quality Control Boards (RWQCB) 401
- California Department of Fish and Wildlife (CDFW) Lake and Streambed Alteration Program (LSA) 1600
- California Coastal Commission (CCC) Coastal Development Permit (CDP)

## FEDERAL PERMITTING SERVICES

- United States Fish and Wildlife Service (USFWS)
  - Federal Endangered Species Act (FESA) Biological Assessments and Compliance
  - Threatened and Endangered Species Section 10(A) Recovery Permits
  - USFWS Consultation and Coordination
- Habitat Mitigation and Monitoring Plans

## CALIFORNIA PERMITTING SERVICES

- Environmental Due Diligence Reports
- California Department of Fish and Wildlife (CDFW)
- Scientific Collecting Permits (SCPs), Sections 650 and 703
- California Endangered Species Act (CESA) assessments and compliance
- CDFW Consultation, Coordination, and Reporting
- Coastal Development Permit (CDP)







## WETLAND DELINEATIONS & JURISDICTIONAL DETERMINATIONS

Our team of experts have more than 50+ years of combined experience conducting wetlands assessments, wetland delineations and jurisdictional determinations throughout California and the Western USA.

## WETLAND SURVEYS & MAPPING

We accurately map wetland boundaries, identify jurisdictional wetlands, and conduct habitat assessments, and collect the data critical to vegetation management.

- Wetland delineations
- Jurisdictional determinations
- Wetland drone mapping
- Wetland restoration
- Wetland botanical expert surveys (including vernal pools)
- Wetland Identification and GIS Mapping
- Soil Analysis
- Hydrological Assessments
- Field Wetlands Monitoring

## WETLAND ANALYSIS & REPORTING

Our team is well-versed at producing high quality deliverables on stringent SCE timeline requirements, such as preliminary memos, full jurisdictional delineation and habitat assessment reports including all GIS mapping and permitting packages. Our Regulatory Specialists and Project Managers oversee the development of the permit strategy and permit packages

- Riparian Corridors Site Analysis
- Wetland permitting & planning for NEPA & CEQA
- Wetland Characterization Reports
- Technical Reports including Letter, Memo, and Jurisdictional Delineation Reports
- Regulatory Compliance Support
- Wetland Monitoring and Management Plans





# BIOLOGICAL SERVICES & SURVEYS

SummitWest offers a full cycle of biological services, from desktop reviews and project pre-planning through surveys, permitting, closeout and mitigation.

- ▼ Project Pre-Planning
- ▼ Desktop Reviews and Reports
- ▼ Construction Compliance
- ▼ Biological Surveys
- ▼ Endangered Species Surveys
- ▼ Botanical Surveys
- ▼ Wildlife Surveys
- ▼ Mitigation & Restoration



**Flexible Scheduling & Staffing.** We know all too well the variability in project needs, weather and the need to rapidly staff a project (especially if a client has fallen behind - desert flowers do not wait, and we excel in rapid adjustments to meet client needs.



**In House Management.** We manage our own teams, no matter how small or large. We provide all safety training, field training, report and deliverable QA/QC, and overall management.

**OVER 100,000 HOURS OF FIELD WORK COMPLETED SINCE 2019**



## SummitWest conducted California Spotted Owl surveys in Los Padres National Forest

Project: Resource Conservation District of Monterey County: Wildlife, Botanical, and Cultural Surveys; Years: 2022 - 2024



## ENVIRONMENTAL PROJECT PRE-PLANNING

SummitWest's comprehensive study designs, species consultations, and data-management plans cover all the bases for a scientifically sound project while complying with environmental protection measures.

- Environmental Requirement Planning
- Section 7 Endangered Species Consultations
- Weed Abatement Planning
- Study Design and Statistical Analysis including GIS Habitat Mapping and Project Preparation
- Pre and Post Construction Reports / Job Walks
- Community Outreach

## DESKTOP REVIEWS & REPORTING

SummitWest provides a variety of desktop reporting services, conducting more than 200 hours per week of desktop reporting for SCE alone.

- Sensitive Species Inventories and Biological Desktop Reviews
- Desktop assessment memos (DAs)
- Pre-activity Survey Reports (PSRs)
- Biological Constraints Reports (BCRs) and Analyses (BCAs)
- Biological Resources Technical Reports (BRTRs)
- Biological Resource Assessments (BRAs) and Biological Assessments (BAs)
- BLM IM project reviews and Biological Assessments
- Baseline studies
- Covered Conductor Project (CCP) Management for SCE

**SummitWest has managed more than half a dozen Covered Conductor Projects (CCPs) and other Large Intake Projects for SCE.**

## CONSTRUCTION COMPLIANCE

SummitWest has 14 years of construction site monitoring across more than 50 Projects. Understanding regulations, client needs and construction's goals all interplay to create a successful work environment.

Our team is well versed in consulting, which means liaising between construction needs and environmental constraints, assisting everyone in meeting their goals.

- Pre-construction surveys & reporting
- Distribution pole surveys
- Construction site monitoring
- Lead monitor, assistant lead monitor and construction lead monitor (CLM) roles
- Environmental Awareness Training (WEAP & Community Outreach Education)
- Environmentally Sensitive Area Fencing and Flagging
- Lead Environmental Inspector Reports and Management
- Emergency Response



**SummitWest has done over 60,000 deteriorated pole & vegetation Management surveys since 2020.**



# BIOLOGICAL SURVEYS

Our team has extensive experience with wildlife and botanical surveys, special-status surveys, and amongst its staff hold over 18 USFWS Recovery Permits for Threatened & Endangered Species.

## GENERAL BIOLOGICAL SURVEYS

- General Habitat Assessments & Surveys
- General Biological Surveys
- Nesting Bird Surveys
- Botanical and Wildlife Surveys
- Vegetation Classification and Mapping
- Sensitive Community Classification and Mapping
- Nonnative Plant Surveys
- Arborist services
- Wildlife Movement and Corridor Studies
- Protocol Threatened, Endangered, and Sensitive Species Surveys
- GIS Mapping
- Environmental Compliance Monitoring & Pre- and Post-Construction Surveys
- Aerial (Drone) Surveys
- Resource Agency Coordination
- Best Management Practice Monitoring
- Emergency Projects



SummitWest staff can cover sensitive species surveys in California, Oregon, Arizona and Nevada.

## ENDANGERED SPECIES & PROTOCOL LEVEL SURVEYS

A SummitWest speciality, our team can perform numerous protocol-level surveys for threatened and endangered species across the western USA.

- 18 USFWS 10 (a) (1) (A) Recovery Permits  
(For a full list of species please visit our website)
  - Highlighted special status species for which we hold permits include:
  - California Gnatcatcher
  - Light Footed Clapper Rail
  - San Bernardino and Stephen's Kangaroo Rats
  - Mojave Ground Squirrel
  - Desert Tortoise
  - California Red-legged Frog
  - Tidewater Goby
  - Vernal Pool Fairy-Shrimp (incl. dry season hatching & raising of eggs)
  - Experience surveying for 68 additional sensitive status wildlife species hundreds of rare plants



## BOTANICAL SURVEYS

Another speciality of SummitWest, our staff have extensive experience with botanical surveys across the western USA. Our founder, Chez Brungraber, has been a dedicated botanist since 2008. Her love of plants is what founded SummitWest in 2010.

Our team has lead and participated in over 50 focused botanical surveys over the last decade, and SummitWest even has launched a proprietary species list app called Species List Pro, which rapidly generates comprehensive species lists with incredible accuracy.

- Rare plant surveys
- Vegetation & sensitive community mapping
- Invasive species mapping
- Restoration monitoring
- Special habitats surveys such as vernal pools and wetlands
- Tree inventory and mapping
- Technical botanical reports
- Geodatabase production
- Herbarium Specimen Collection

## MITIGATION & RESTORATION

If your project requires a restoration component or mitigation monitoring, you are in good hands with SummitWest.

- Habitat Mitigation, Monitoring, and Reporting Plans (HMMP)
- Mitigation and Restoration Summary Reports
- Ecological Restoration Planning and Implementation; Mitigation and Management Plans
- Restoration site monitoring
- Species restoration population viability
- Planting plans

- **We have completed over 50 rare plant survey projects,**
  - More than 20 were large-scale, long-term projects covering a diverse range of habitats
  - Serving large clients such as Google, SCE, SoCalGas, USFS, SDG&E, as well as regional conservation groups, tribes, and municipalities.
  - California, Oregon, Nevada, Arizona and Massachusetts





# CULTURAL RESOURCES

SummitWest's Cultural Resources Department offers surveys, monitoring, tribal consultations, BLM lands access, and various cultural specific reports. Our team is versed in the numerous permits required, such as Archaeological Resources Protection Act (ARPA) Permit and National Historic Preservation Act (NHPA) Compliance (Section 106 Process). We offer Historic and Prehistoric Archaeological services and Osteological services.

## ARCHAEOLOGY

### Archaeological Services

- Phase I (Survey), Phase II (Evaluation), and Phase III (Mitigation/Excavation) investigations
- Section 106 compliance under the National Historic Preservation Act (NHPA)
- Cultural resource surveys, monitoring, and data recovery
- Artifact analysis
- GIS-based site documentation

### Technical Capabilities

- 3D scanning and photogrammetry for site documentation
- Laboratory analysis of artifacts
- Database management and reporting



### We perform Archaeological Site Testing:

- Auger Testing
- Shovel Test Pits (STPs)
  - 1x1 test pits
  - Large-scale excavations

## REGULATORY COMPLIANCE AND PERMITTING

SummitWest's Principal Investigator who can ensure proper oversight, compliance, and scientific integrity on our projects. Our PI and experienced cultural resources team manage excavation, analysis, and reporting while ensuring compliance with local, state, and federal regulations.

- National Environmental Policy Act (NEPA) compliance
- State Historic Preservation Office (SHPO) coordination
- Tribal consultation and coordination
- Local and federal permitting



# GEOGRAPHIC INFORMATION SERVICES (GIS)

At SummitWest, we offer a diverse range of GIS-based services, catering to differing project requirements. Our expertise extends to specialized GIS projects, such as climate change, wildlife corridor, and habitat mapping. But we go even further, seamlessly integrating and developing GIS systems and databases to support your projects.

## Our team uses the following tools:

- ESRI products
  - ArcGIS
  - Field Maps
  - Survey123
- QGIS
- StoryMaps
- SRI

## GIS SERVICES

- Spatial Analysis & Impact Analysis
- Natural Resource Mapping
- Water Resource Mapping
- Field Data Analysis
- Remote Sensing
- Attribute Tables
- Georeferenced Figures
- Data Integration & Database Creation
- Climate Change Modeling
- Wildfire Risk
- Wildlife Movement & Corridor Studies
- Sub-Meter GPS Mapping
- Drone Imagery Services

## GIS ANCHORS ALL PROJECTS:

From wetlands delineations to daily survey reports; vegetative community mapping to sensitive status species mitigation plans - GIS is a cornerstone to project success.

Our team of GIS specialists and technicians can produce FieldMaps collection forms, basic or complex resource maps, calculate acreages and coverage of various habitat types and project-specific field prescriptions, and generate complex attribute tables, geodatabases, and interactive story maps.

We are also skilled at conducting larger, more computational GIS-based projects and can use vast databases to model and predict climatic impacts.

## DRONE SURVEYS




**Speed and Accuracy.** By utilizing real-time GIS data collection platforms, our clients benefit from enhanced data collection, analysis, visualization, and decision-making capabilities. GIS provides the framework for processing, analyzing, and integrating the collected data into meaningful spatial information.



**Drone Surveys.** Along with industry standard site reconnaissance and habitat assessment techniques, our team employs drones to perform large-landscape assessment and resource mapping with fine precision, imaging, and GIS data collection. Drones enable efficient and cost-effective data acquisition. Our drone program allows for natural resource mapping across rugged terrains and within narrow timeframes and tight budgets.

*SummitWest has licensed drone pilots on staff and can perform drone monitoring and mapping services.*





**SummitWest excels in data management, tracking 10,000+ surveys annually.** Our logistics, cutting-edge technology, and automated data management processes form the backbone of our operations. These pillars boost efficiency and elevate our capabilities beyond our size.

Ocotillo Wind Farm Rare Plant Surveys  
Ocotillo, CA

# PROJECT MANAGEMENT

SummitWest has put focus on the logistics and collaboration parts of project management. With dedicated project managers, environmental coordinators, schedulers, and a full time safety officer, we provide full service project management to support environmental projects of all sizes.

- ▼ Program Development
- ▼ Coordination & Scheduling
- ▼ Data Management
- ▼ Collaboration
- ▼ Technical Reports & Geodatabases
- ▼ QA/QC & Document Review
- ▼ Agency Coordination

**Our success lies in our strong data management, clear communication and transparency with clients, full accountability, and internal and external collaboration.**

## WE FOCUS ON:



**Logistics.** In-house schedulers and environmental coordinators optimize crew staffing and project support, based on our staff's certifications and locations, facilitating effective support for projects of all sizes and durations.



**Data Management.** SummitWest excels in data management, resulting in high-quality external deliverables, including geospatial data and reports. We're empowered to deliver exceptional results that exceed expectations, thanks to our commitment to innovation and precision.



**Smooth Process.** From initial meetings to determine client goals, expectations, and systems, to our project planning, coordination, and execution, SummitWest focuses on a smooth process the whole way through. We hold frequent check in-meetings, create internal project-specific operations guides, contact charts, and schedules, and develop project-specific Job Hazard Analyses and Safety Training sessions tailored to each client and their unique project.



# ENVIRONMENTAL SERVICES

SummitWest offers a multitude of environmental services for stormwater construction compliance, climate change studies, including greenhouse gas emissions, emergency services & response to natural disasters such as floods and wildfires, and wetland delineations & jurisdictional determinations.

## STORMWATER SERVICES

Our Stormwater Department specializes in helping construction projects meet environmental regulations while minimizing water pollution risks. We provide expert compliance solutions to keep projects on schedule and in full regulatory alignment. We have both Qualified Stormwater Developer (QSD) and Qualified Stormwater Practitioner (QSP) on staff.

- Stormwater Pollution Prevention Plan (SWPPP) Development & Permitting
- Erosion & Sediment Control Planning (including BMPs)
- Compliance Monitoring & Inspections (routine and storm event-driven)
- Training for construction crews
- Consulting for compliance strategies



## CLIMATE CHANGE STUDIES

We provide unparalleled expertise, dedication, and commitment to delivering superior Climate Change services tailored to your specific environmental needs. With our extensive experience in environmental consulting, we understand both the complexities of climate change and the goals our clients strive to achieve amidst this changing landscape.

- Greenhouse gas emissions
- Climate action plans
- Climate resiliency and sustainability plans
- Climate refugia studies
- Climate risk assessment
- Climate adaptation planning & strategy development
- Climate mitigation planning
- Vulnerability and risk assessment
- General plan and specific plan adaptation policies
- GIS-based vulnerability mapping
- Wildfire protection plans
- Sea-level rise constraints analysis
- Adaptive management planning for habitat conservation
- Functional assessments
- Ecological valuations
- Emissions Reduction Strategies & policy development
- Sustainability Planning and Reporting
- Carbon sequestration calculations
- Carbon Offsetting and Renewable Energy Solutions
- California Air Resources Board regulatory review
- Regional transportation planning and Sustainable Communities Strategies (SB 375)
- CEQA and NEPA strategy and analysis

## EMERGENCY SERVICES

SummitWest has over a decade of experience with emergency response projects ranging from small to large-scale disasters. Our team has worked in both the emergency and restoration phase of these disasters.

One such project was monitoring the drilling of an emergency water well on Catalina Island for SCE. Also for SCE, SummitWest was heavily involved in the Creek Fire (Shaver Lake, CA) response by SCE, providing lead monitors and schedulers for the effort. Our team also has experience with emergency pole replacement services, post-fire Burned Area Emergency Response (BAER), and most recently, has been assisting with the emergency response for the Palisades Fire in southern California.